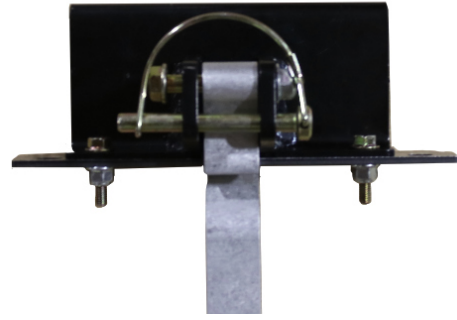
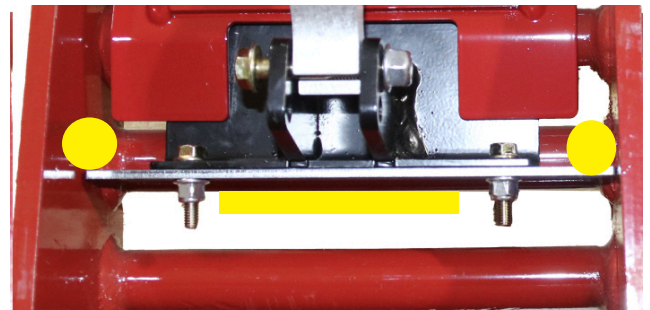


Case IH Flagship Cover Plate Update Kit

1. Attach the gray tab (holes to the top) to the black latch plate and hook to the 2nd bar on the rectangle base side of the concave.



2. Connect the gray tab to the concave with a **weld** on the back middle and a small **weld** in each corner on the front side of the tab.



3. Install the small red plate to the backside of the tab and insert the cover plate.



Disclaimer of Liability:

Copperhead Ag provides the new, updated cover plate to its customers in good faith and with the intent of enhancing the performance of the associated equipment. However, Copperhead Ag makes no warranty, either expressed or implied, regarding the installation or welding of the cover plate by the customer or any third party acting on behalf of the customer.

By purchasing and/or installing the cover plate, the customer acknowledges and agrees that:

1. **Liability Waiver:** Copperhead Ag shall not be held liable for any damages, defects, failures, or injuries resulting from improper welding, installation, or misuse of the cover plate, whether performed by the customer or any third party.
2. **Transfer of Responsibility:** The customer assumes full responsibility for ensuring that the cover plate is properly installed, including but not limited to any welding or other modifications. This includes ensuring that all installation procedures comply with industry standards, local laws, and regulations.
3. **No Assumption of Risk by Copperhead Ag:** All risks associated with the welding and installation of the cover plate are solely the responsibility of the customer. Copperhead Ag shall not be responsible for any claims or costs arising from the use, installation, or modification of the product.